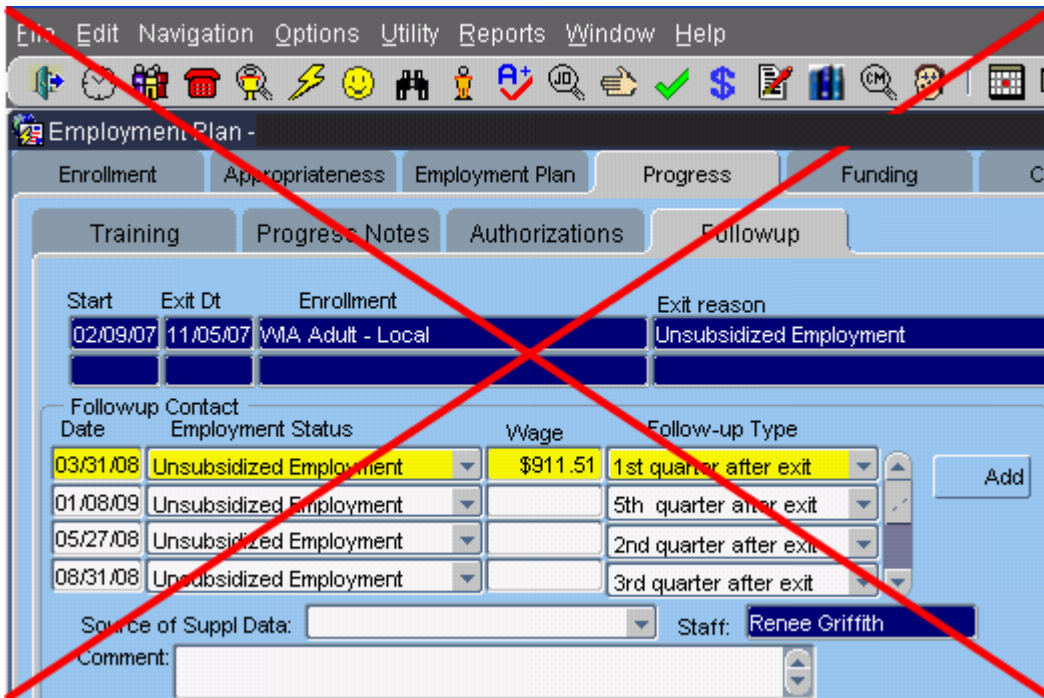


WIOA ADULT AND DISLOCATED WORKER SIX MONTHS AVERAGE EARNINGS PERFORMANCE MEASURE:

Where is data for the Six Months Average Earnings performance measure taken from in MontanaWorks?

The only sources allowed for this data are UI, WRIS, or federal wage records, which are not included in MontanaWorks. If wage data is not found using these sources, we are not allowed to use Follow-Up Contact information.



Refer to the WIA Policy Manual, Section 5.20 Performance Measures for more information on the nine Common Measures.

Continue with 'Youth Placement in Employment or Education.'