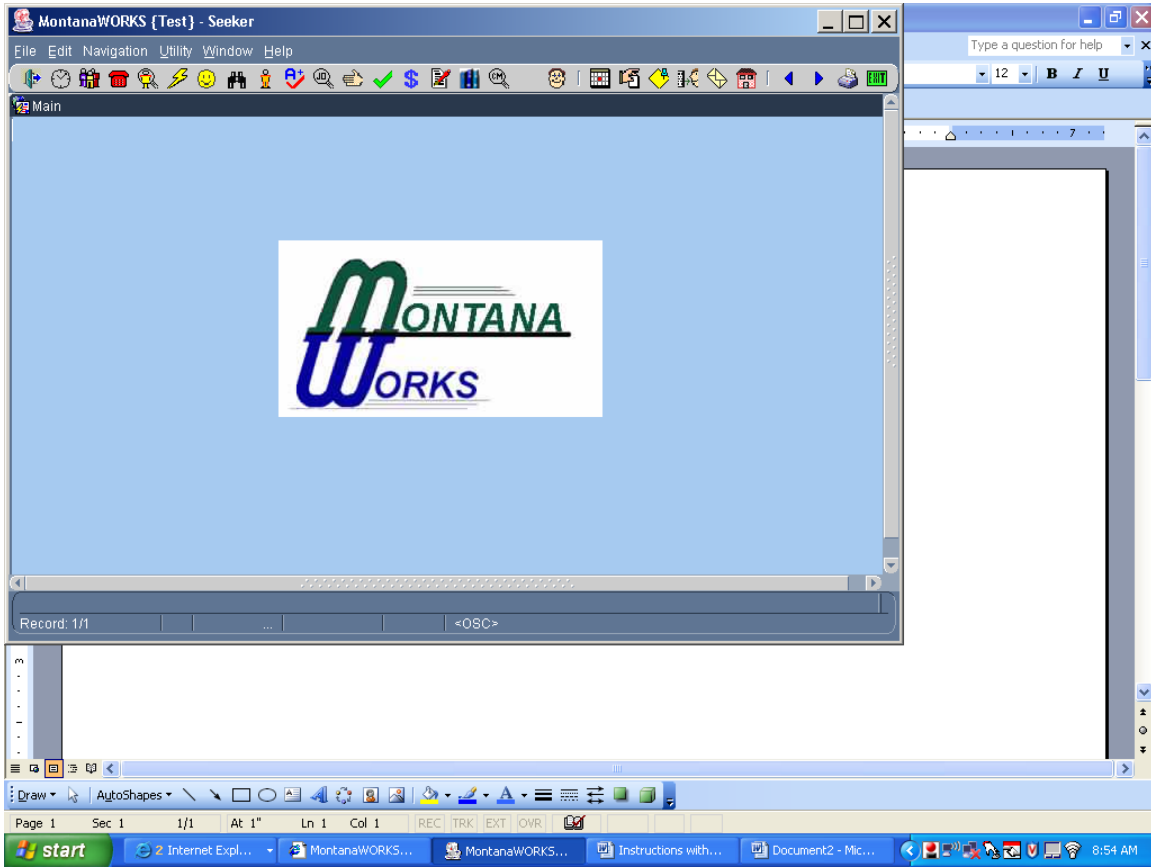


# Splash Screen Icon Description





This icon is the “Close Current Form” icon. Will close the page you are currently working with.



This icon is the “Daily Schedule” icon. Will navigate you to the Daily Schedule.



This is an ES function.

This icon is the “Employers” icon. Will navigate you to the Employers section where you can search for an employer.



This is an ES function.

This icon is the “Job Orders” icon. Will navigate you to the Job Orders section where you can search for job orders.



This is an ES function.

This icon is the “Seeker Matching” icon. Will navigate you to the Seeker Matching section.



This is an ES function.

This icon is the “Quick Referral” icon.



This is the “Seeker Entry” icon. Will navigate you to the Seeker Entry screen.



This is the “Find Seeker” icon. Will navigate you to the Find Seeker screen.



This is the “Seeker” icon. Will navigate you to the Seeker screen. (When someone is already in the system.)



This is an ES function.

This is the “Testing” icon. Will navigate you to the Testing screen for ES proficiency tests and **NOT** the TABE test.



This is an ES function.

This is the “Individual Job Order Search” icon.



This is the “Initial Interview” icon. Will navigate you to the Initial Interview screen.



This is the “Assessment” icon. Will navigate you to the Assessment screen.



This is the “Eligibility” icon. Will navigate you to the Eligibility screens.



This is the “Employment Plan” icon. Will navigate you to the Employment Plan screens.



This is the “Seeker History” icon. Will navigate you to the Seeker History Screen.



This is the “Case Management Search” icon. Will navigate you to the Case Management Screen.



This is the “Intake Queue” icon. Will add the seeker to the intake queue (for Employment Service only).



This is the “Create Appointment” icon. Will create an appointment in the Scheduler section of MontanaWORKS.



This is the “Create Task” icon. Will create a task in the Scheduler section of MontanaWORKS.



This is the “Create Note” icon. Will create a note and add it to the Seeker Info screen, not on the Note Screen for case management.



This is an ES function.

This is the “Create Referral” icon. Will create a referral for Employment Service activities only.



This is an ES function.

This is the "Seeker Correspondence" icon.



This is an ES function.

This is the "Service Referrals" icon.



This will take you to the previous record.



This will take you to the next record.



This is the Print Management icon.



This will exit all records.