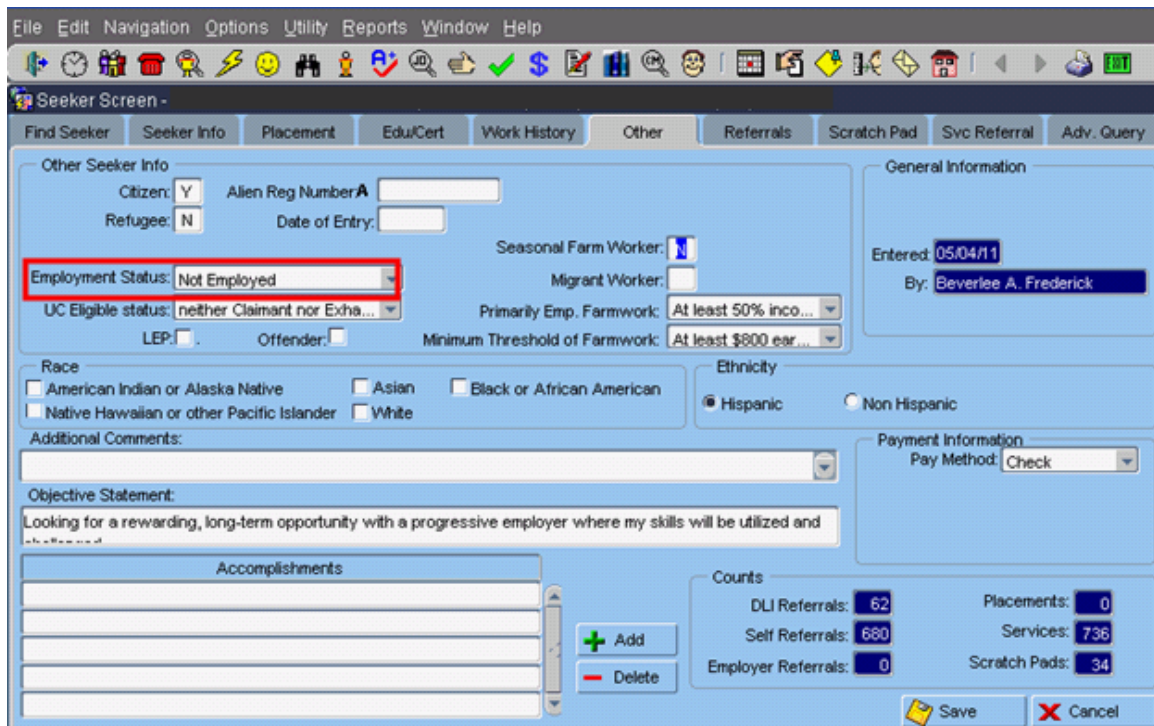


## WIOA ADULT AND DISLOCATED WORKER ENTERED EMPLOYMENT PERFORMANCE MEASURE:

Where is data for the Entered Employment performance measure taken from in MontanaWorks?

The performance measure first looks at whether the participant was employed at participation. This field can be found on the Seeker-Other tab.

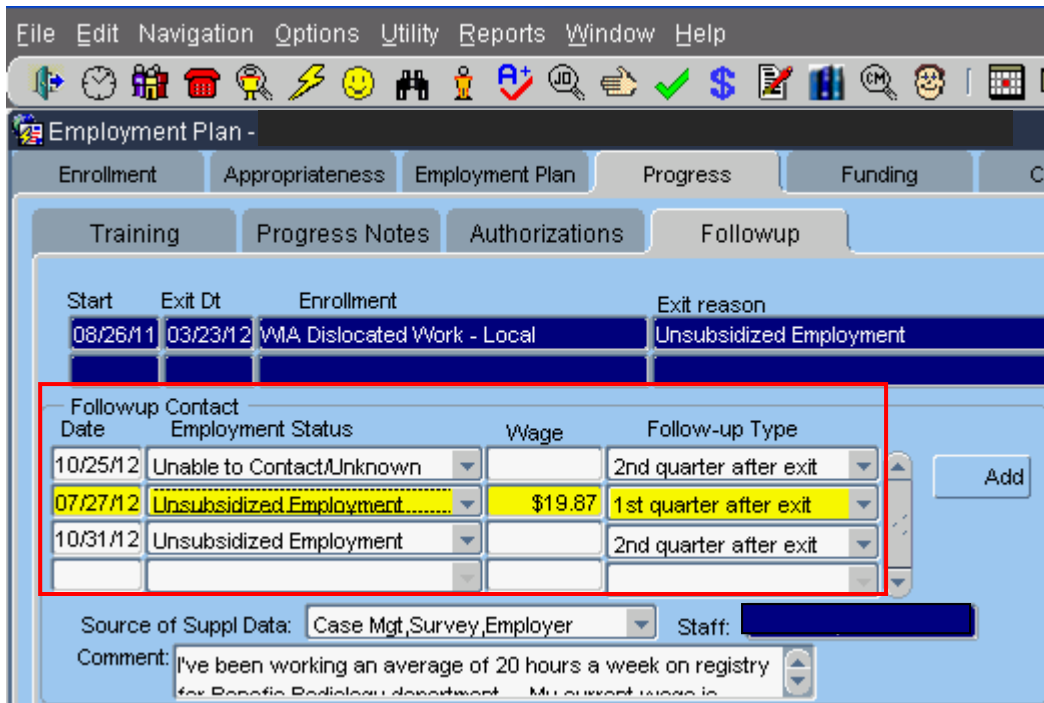


The screenshot shows the 'Seeker Screen - Other' tab in the MontanaWorks application. The 'Employment Status' dropdown menu is highlighted with a red box and is currently set to 'Not Employed'. Other visible fields include 'Citizen: Y', 'Refugee: N', 'Date of Entry', 'Seasonal Farm Worker: N', 'Migrant Worker', 'UC Eligible status: neither Claimant nor Exha...', 'L.E.P.', 'Offender', 'Primary Emp. Farmwork: At least 50% inco...', and 'Minimum Threshold of Farmwork: At least \$800 ear...'. The 'General Information' section shows 'Entered: 05/04/11' and 'By: Beverlee A. Frederick'. The 'Race' and 'Ethnicity' sections are also visible. The 'Objective Statement' field contains the text: 'Looking for a rewarding, long-term opportunity with a progressive employer where my skills will be utilized and'. The 'Accomplishments' section has a table with three empty rows and 'Add' and 'Delete' buttons. The 'Counts' section displays: DLI Referrals: 62, Self Referrals: 680, Employer Referrals: 0, Placements: 0, Services: 736, and Scratch Pads: 34. The 'Payment Information' section shows 'Pay Method: Check'. The interface includes a menu bar (File, Edit, Navigation, Options, Utility, Reports, Window, Help) and a toolbar with various icons.

Any participants not employed at participation will be included in this measure, which makes up the denominator for this measure.

Then we determine if the participant was employed during the first quarter after exit. The first sources we use for this measure are UI, WRIS, or federal wage records.

If wage records are not found using these sources, we look at the Follow-Up tab's Follow-Up Contact information.



If the wage records or follow-up record for the first quarter after exit indicated that the participant was in unsubsidized employment, or apprenticeship, or military service, the participant will count positively and be included in the numerator for this measure.

**Continue with 'Employment Retention.'**