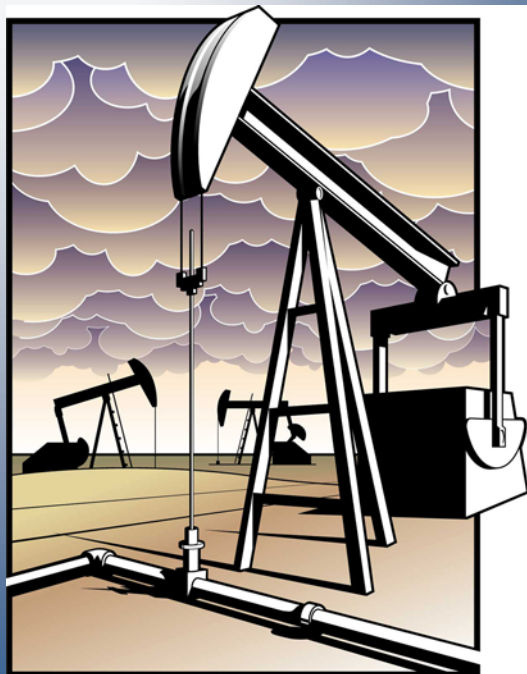


# Careers In The Oilfield

**General  
Job Descriptions  
for Various  
Positions in the  
Oilfield Industry.**



**Created and shared by**  
**Williston Job Service**

**Edited By**  
**Sidney Job Service**

This document is not an all inclusive document. The purpose is to give the reader a general overview of what jobs are available.

Edited July 2011

# Table of Contents

Overview.....	6
Formation Maps.....	7
Well Production Maps.....	8
Three Forks/Sanish Formations Map.....	9
Drilling Rig Jobs.....	10-12
Drilling Crew Positions.....	10
Cleaner / Painter	
Lease Hand / Roustabout	
Floorhand / Roughneck	
Motor Hand	
Derrick Hand	
Driller	
Rig Manager / Tool Pusher	
Pipeline Construction and Maintenance Jobs.....	13-14
Pipeline Construction Positions.....	13
Construction Manager	
Construction Foreman	
Assistant Foreman	
Lead Hand	
Welder	
Pipefitter	
Pipeliner – Entry Level Labor Position	
Crane Operator	
Heavy Equipment Operator	
Heavy Duty Mechanic	
Swamper – Entry Level Labor Position	
Small / Specialty Engine Mechanic	
Truck Driver	
Nozzleman	
Oiler	
Seismic Jobs.....	15-21
Seismic Recording Crew Positions.....	15
Seismic Helper / Jughound – Entry Level Labor Position	
Crew Chief	
Coordinator	
Troubleshooter	
Bag Runner	
Drop Zone Marker – Bag Marker	
Shooter / Blaster	
Operator / Observer	
Junior Operator / Observer	
Party Manager	

<b>Line Clearing Crew Positions.....</b>	<b>17</b>
Cat Push	
Cat / Mulcher Operator	
Head Slasher	
Slasher	
<b>Seismic Drilling Positions.....</b>	<b>18</b>
Drill Push	
Driller (Seismic)	
Driller's Assistant	
<b>Vibe and Alternative Source Positions.....</b>	<b>19</b>
Vibe Tech	
Vibe (or other source) Operator	
<b>Seismic Survey Crew Positions.....</b>	<b>19</b>
Survey Coordinator (Seismic)	
Line Producer	
Surveyor – GPS (Seismic)	
Surveyor – Conventional (Seismic)	
Surveyor's Assistant	
Chainer	
Chainer's Assistant	
Mapper	
Pipe and Buried Utility Locator	
Assistant Locator	
<b>Mapping and Survey Jobs.....</b>	<b>22-25</b>
<b>Land Survey Positions Overview.....</b>	<b>22</b>
Land Survey Coordinator	
Land Surveyor – Party Chief	
Land Survey Assistant	
<b>Seismic Survey Crew Positions.....</b>	<b>23</b>
Survey Coordinator	
Line Producer	
Surveyor – GPS (Seismic)	
Surveyor – Conventional (Optical)	
Surveyor's Assistant	
Chainer	
Chainer's Assistant	
Mapper	
Pipe and Buried Utility Locator	
Assistant Locator	
Land Agent	
Construction Consultant	

Transport Jobs.....	26-28
Transport Positions Overview.....	26
Truck / Semi Driver	
Drilling Rig Transport Driver	
Water Truck Driver	
Gravel Truck Driver	
String Truck Driver	
Supply Truck Driver	
Vacuum Truck Driver	
Explosives Delivery Driver	
Fuel Truck Driver	
Hotshot Driver / Courier	
Helicopter Pilot	
Commercial Airplane Pilot	
Swamper	
Mechanic	
Dispatcher	
Picker Truck Driver / Operator	
Forklift Operator	
Credits.....	29

## Careers in the Oil and Gas Industry

Required qualifications vary from field to field, but the following are required for nearly every oilfield position:

- Driver's License
- Clean Driving Record
- First Aid / CPR
- H2S Training
- Background Check
- Drug Screening
- May have minimum age restrictions of 18 or 21 years old

The work is very intensive and physical. Work is completed in all weather conditions.

Many employers will provide training to new employees, but if you already have the necessary tickets (certification), companies will save themselves the expense by hiring you.

First aid certification can be obtained from several places, such as the Red Cross organization or through the local Fire or EMS Departments.

Company schedules vary. Examples are 4 days on/ 4 days off, 7 days on/ 7 days off, 2 weeks on/1 week off, 2 weeks on/ 2 weeks off. Truck Driving positions are different. Companies have DOT regulations to follow.

## Oil Industry Job Descriptions

### Drilling Rig Jobs

Land and offshore rig jobs.

### Pipeline Jobs

Jobs related to the construction and maintenance of oil and gas pipelines.

### Seismic Jobs

Field jobs relating to seismic exploration and the acquisition of seismic data.

### Mapping and Survey Jobs

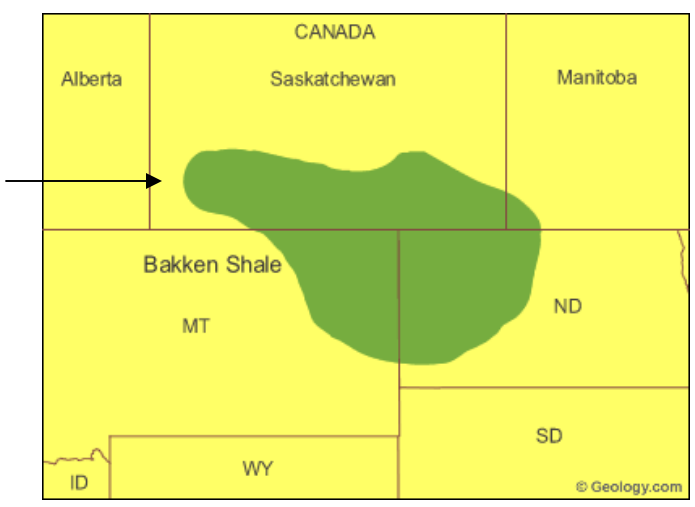
Jobs related to the placement of oilfield facilities and pipelines. Also includes land acquisition and permitting jobs.

### Transport Jobs

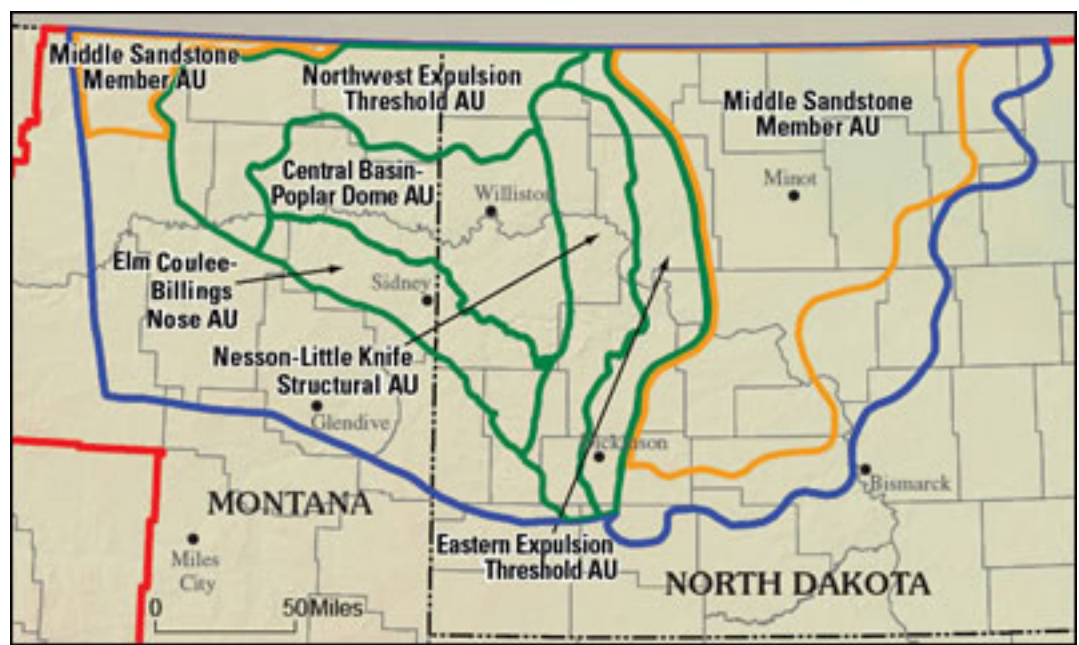
All oilfield transportation related jobs – including transportation of oil equipment, materials, and personnel.

# Formation Maps

Bakken formation:  
Montana, North Dakota,  
and Canada

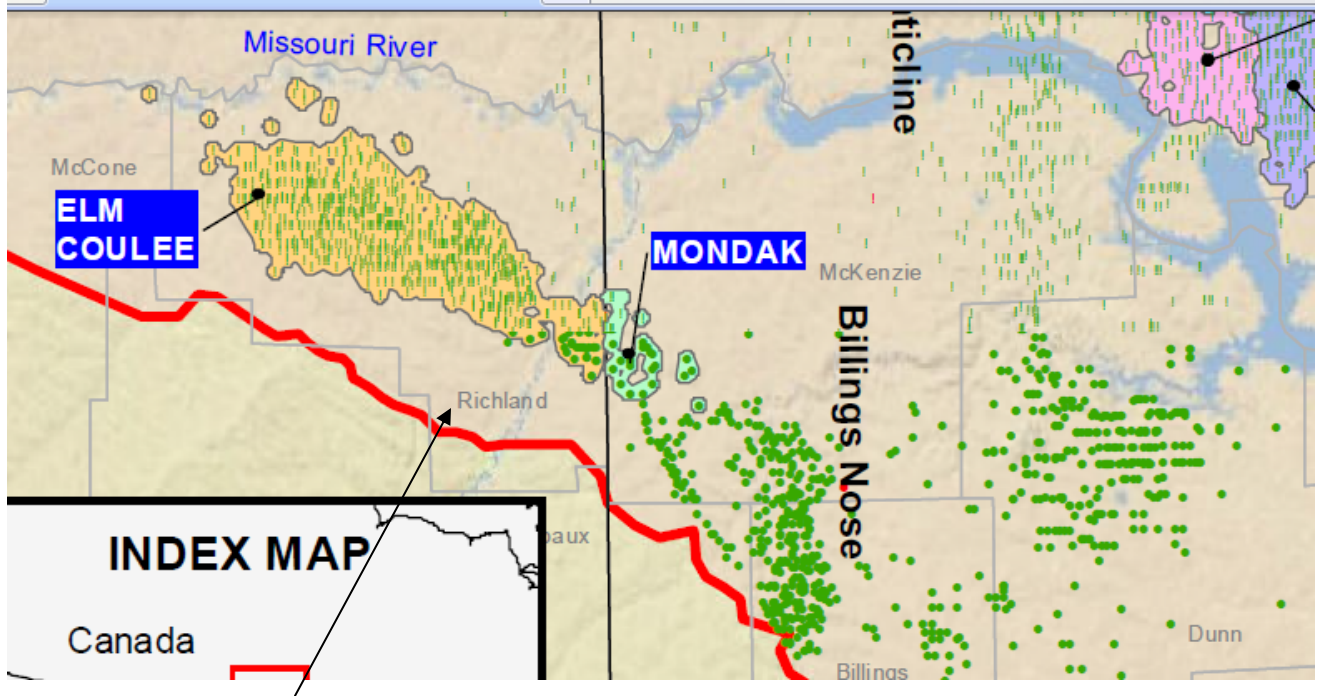


Various  
formations



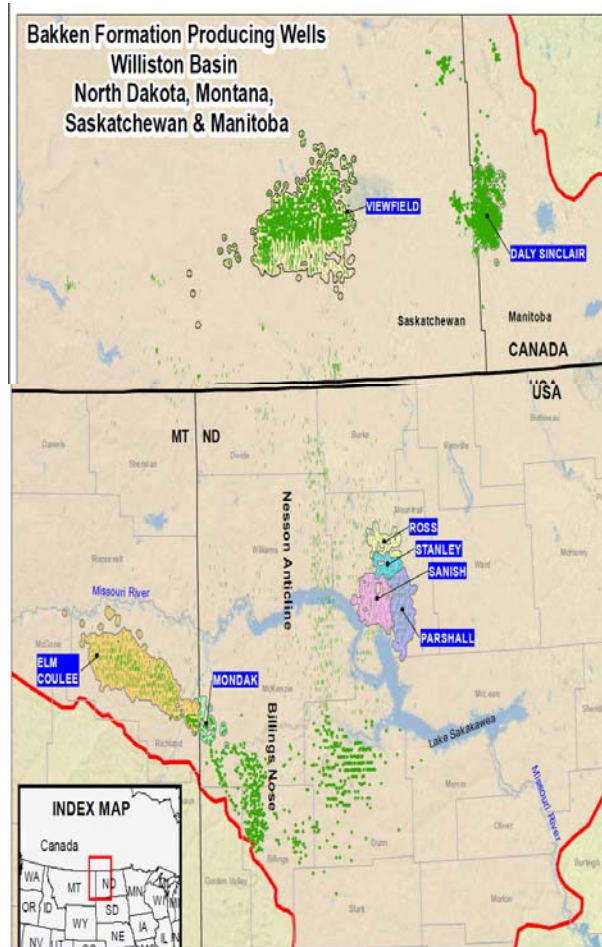
# Montana and North Dakota Producing Wells

**\*Note Richland County\***



Richland County

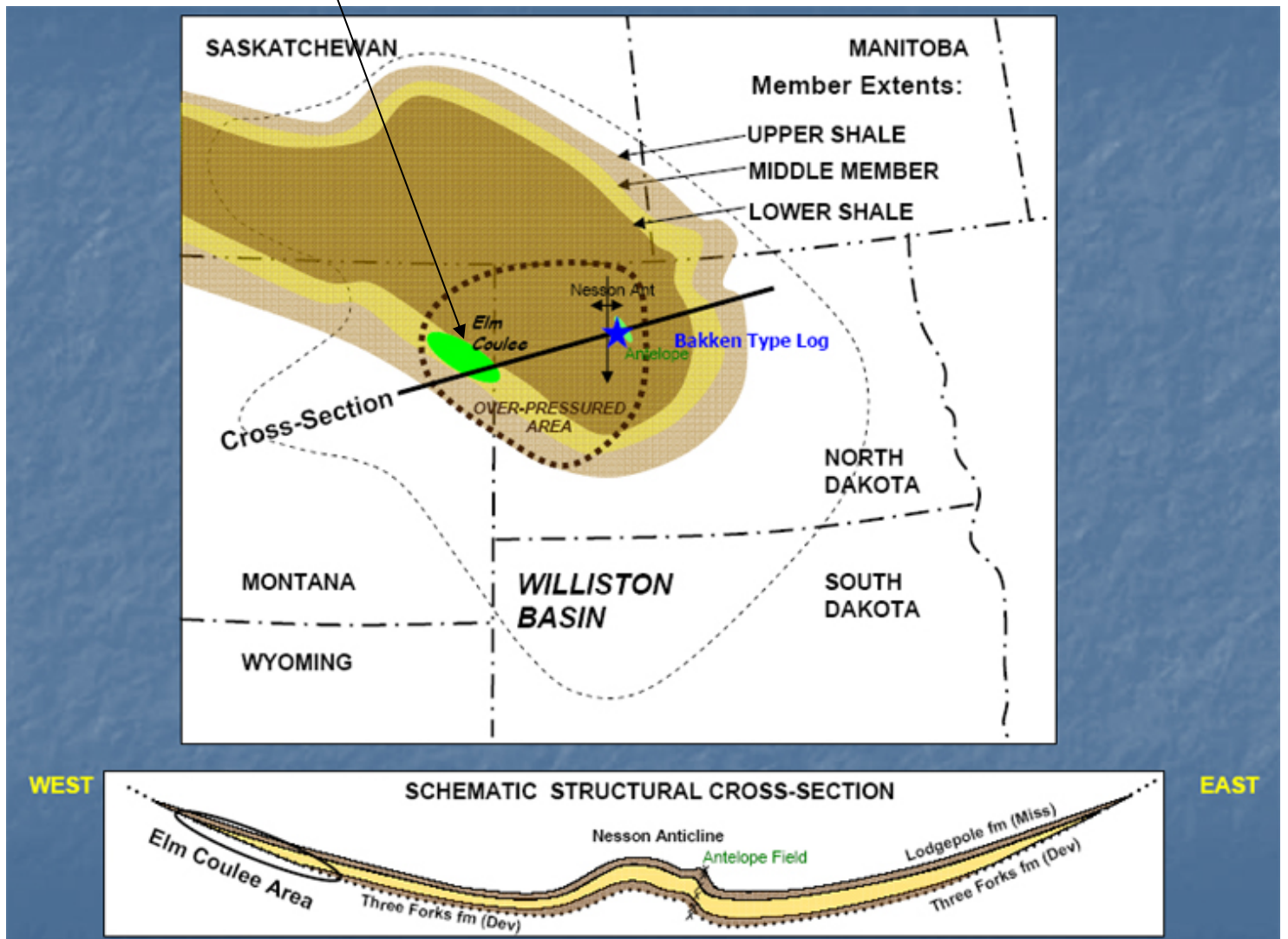
Larger Area view of producing wells in Montana, North Dakota, and Canada



# Three Forks/Sanish Shale Formation

Three Forks formation sits just below the upper Bakken Shale formation. It has not yet been determined if this is a separate formation or another part of the Bakken formation.

Point of reference: Elm Coulee sits in Richland County



## Drilling Crew Positions

A drilling rig drills a hole in the ground or the ocean floor to a predetermined depth for optimum production.

Once the hole is complete, the drill crew runs casing into the well bore and pours concrete around the casing.

### Cleaner / Painter

- Cleaner / Painters are typically found on marine rigs.
- Very physical job.
- All weather, outdoor job.
- Heavy lifting.
- Usually hourly pay.
- Can have a lot of overtime.
- Occasionally accommodations and meals paid.
- A lot of travel.
- Keeps the rig clean and tidy.
- Cleans and repaints areas where paint is worn or chipped to prevent rust.
- Performs other unskilled labor as necessary.
- Helps other workers as necessary.

### Lease Hand / Roustabout

- Entry-level labor position.
- Very physical job.
- All weather, outdoor job.
- Heavy lifting.
- Usually hourly pay.
- Can have a lot of overtime.
- Occasionally accommodations and meals paid.
- A lot of travel.
- Uses various vehicles to move equipment, pipe, and waste materials.
- May drive extensively to pick up and transport various supplies and materials needed by the rig.
- Loads / unloads trucks.
- Digs ditches, paints, removes garbage.
- Keeps the lease site tidy and hazard free.
- Performs all other unskilled labor as necessary.
- Helps other workers as necessary.
- Reports to Driller.

### Floorhand / Roughneck

- May start as a Floor Hand or be promoted from Lease Hand.
- Very physical job.
- Connect / disconnect pipe using tongs.
- Collect core and cutting samples.
- General housekeeping on the rig floor.
- Painting where required.
- Assists the Motor Hand and other workers where necessary.
- All weather, outdoor job.
- Heavy lifting.

- Usually hourly pay.
- Can have a lot of overtime.
- Occasionally accommodations and meals paid.
- A lot of travel.
- Reports to Motor Hand.

### Motor Hand

- Usually promoted from Floor Hand.
- Responsible for maintenance and operation of the rig's motors.
- Responsible for general equipment maintenance around the rig.
- Runs the draw-works and rotary table.
- Performs testing, lubrication, and maintenance of moving parts.
- Helps to be mechanically inclined.
- Trains new crew members.
- All weather, outdoor job.
- Heavy lifting.
- Usually hourly pay.
- Can have a lot of overtime.
- Occasionally accommodations and meals paid.
- A lot of travel.
- Assists the Driller and Derrick Hand as necessary.
- Reports to Driller.

### Derrick Hand

- Usually promoted from Motor Hand.
- Works in the rig's derrick about 20% of the time.
- Guides the drill pipe in and out of the elevators.
- Steadies the pipe from the top while it's connected/disconnected at the bottom.
- Responsible for maintaining fluid pumps and circulation system.
- Monitors and maintains the drilling fluid.
- Trains new crew members.
- Assists the Driller as necessary.
- All weather, outdoor job.
- Heavy lifting.
- Usually hourly pay.
- Can have a lot of overtime.
- Occasionally accommodations and meals paid.
- A lot of travel.
- Reports to Driller.
- Should be comfortable working with heights

### Driller

- May be promoted from Derrick Hand.
- Runs the drilling rig.
- Moves, positions, and sets up the rig at the desired location, and dismantles the rig once drilling is complete.
- Operates pumps and other secondary equipment.
- Plans and organizes duties for other workers.
- Conducts safety meetings and safety drills.

- Ensures that workers properly understand safety procedures.
- Ensures that workers properly use personal protective equipment.
- Responsible for the rig and personnel.
- Keeps records of the rig's production and other rig operations.
- All weather job.
- Pay varies.
- Can have a lot of overtime.
- Occasionally accommodations and meals paid.
- A lot of travel.
- Reports to Rig Manager.

### Rig Manager – Tool Pusher

- Responsible for every aspect of the rig and its operations.
- Responsible for the safety of all workers.
- Ensures that rig operations comply with environmental and other government regulations.
- Responsible for the rig's production and costs.
- Responsible for planning rig moves around road bans and other obstacles.
- Plans and organizes final site preparation before the rig is assembled and site clean up after the rig is dismantled.
- Organizes and supervises the setup and dismantling of the rig.
- Pay varies.
- Occasionally accommodations and meals paid.
- A lot of travel.
- Reports to head office and the client's representative on site.

# Pipeline Construction and Maintenance Jobs

## Pipeline Construction Positions

Pipeline construction companies connect and bury pipe of various types and sizes. Pipelines are used to safely collect and transport all types of petroleum products.

### Construction Manager

- The pipeline company's field representative.
- Responsible for overseeing all aspects of the construction project.
- Responsible for all supervisors, employees, and contract workers.
- Ensures that jobs are completed in a timely and cost efficient manner.
- Reports to head office and to the oil company.
- Pay varies with experience and qualifications.

### Construction Foreman

- Responsible for hiring and training staff
- Responsible for crew scheduling.
- Coordinates with the assistant foreman and lead hands to avoid scheduling conflicts and keep crews running efficiently.
- Oversees all personnel on the project, including all construction crews.
- Ensures that all staff are properly trained in emergency procedures.
- Reports to the construction manager.
- Pay varies with experience.

### Assistant Foreman

- Assists the foreman as necessary.
- Pay varies with experience.

### Lead Hand

- Responsible for the activities and scheduling of a construction crew.
- Ensures that the crew operates safely and efficiently.
- Coordinates with the foreman or assistant foreman.

### Welder

- Welds segments of pipe together.

### Pipefitter

- Works with hoist operator to align pipe segments.
- Guides pipes into the trench.
- Inserts spacers between pipe segments.
- Inspects pipe joints to ensure proper alignment.
- May apply glue to non-metal pipes.

### Pipeliner –Entry Level Labor Position

- Maintains pipelines and in-line facilities.
- Places pipe supports and pipe along the pipeline route prior to construction.
- Picks up pipe supports and any garbage along pipeline route once construction is complete.
- Removes and replaces obstacles such as fences and water lines.

- May operate heavy machinery such as trenchers, hoes, and bulldozers.
- Uses a chainsaw, axe, or other tools to remove trees and brush from the pipeline right-of-way.
- Uses hand tools to dig drainage ditches as required.
- Cleans and paints exposed metal as needed to prevent corrosion.
- Very physical job.
- Transports parts and supplies to the jobsite from a storage site or the nearest town.

### Crane Operator

- Uses mobile cranes or picker (boom) trucks to transfer equipment and supplies on and off of transport trucks.

### Heavy Equipment Operator

- Operates heavy equipment including cats/bulldozers, track and wheeled hoes, bobcats and forklifts, front end loaders, graders, trenchers, and power shovels.
- Used in various areas of pipeline construction.
- Responsible for operating equipment in a safe and efficient manner.

### Heavy Duty Mechanic

- Repairs trucks and large equipment on-site.

### Swamper *Entry Level Labor Position*

- Travels with the transport.
- Assists the driver as necessary.
- Loads and unloads the transport.
- Cleans the truck and equipment.
- Inspects tie-downs and other retaining devices for wear and damage.
- Ensures that loads are properly tied down before transport.

### Small / Specialty Engine Mechanic

- Repairs small engines in specialty equipment.

### Truck Driver

- Operates various types of transports including water trucks, fuel trucks, gravel trucks, string trucks, vacuum trucks, and high boys / low boys.
- Truck drivers are required during every stage of the construction project.
- Responsible for operating the truck in a safe and efficient manner.

### Nozzleman

- Operates the sandblaster nozzle and other high pressure equipment.

### Oiler

- Ensures that all mechanical equipment is properly lubricated.

# Seismic Jobs

## Seismic Recording Crew Positions

Seismic crews create hundreds of small earthquakes using explosives and other energy sources. These vibrations are precisely measured by specialized equipment to compile a three-dimensional map of the sub-surface rock formations and petroleum reservoirs.

### Seismic Helper / Jughound *Entry Level Labor Position*

- Various titles for this position include: jughound, jug hustler, seismic helper, recording crew worker, and others.
- Very physical job.
- Carries and positions seismic cables and geophones through all types of terrain.
- All weather, outdoor job.
- Heavy lifting.
- Usually hourly pay.
- Can have a lot of overtime.
- Occasionally accommodations paid.
- A lot of travel.
- Reports to Crew Chief.

### Crew Chief

- Responsible for the production and safety of the layout or pick-up crew (usually 4-6 people).
- Performs all duties of the Seismic Helper.
- Reports to Coordinator.

### Coordinator

- Organizes layout and pick up crews
- Tracks equipment and personnel.
- Organizes drop-offs and pick-ups for crews.
- Ensures the smooth operation of the seismic crew.
- Organizes helicopter operations on heli-portable jobs.
- All weather, outdoor job.
- Heavy lifting.
- Usually hourly pay.
- Can have a lot of overtime.
- Occasionally accommodations paid.
- A lot of travel.
- Reports to Observer, Party Manager.

### Troubleshooter

- The operator's "hands in the field".
- Fixes problems with equipment and layout.
- This position is typically filled by seismic helpers.
- May also work with the layout crew.
- All weather, outdoor job.
- Heavy lifting.
- Usually hourly pay.

- Can have a lot of overtime.
- Occasionally accommodations paid.
- A lot of travel.
- Reports to Coordinator, Operator.

### Bag Runner

- Connects bags of seismic equipment to hooks or a carousel hanging below the helicopter for transport to the layout crew at the front of the line.
- This is a rather hazardous position that involves frequent work under the helicopter, and often involves running through mountain terrains between equipment bags.
- This position is typically filled by seismic helpers.
- May also work with the pick-up crew.
- All weather, outdoor job.
- Heavy lifting.
- Usually hourly pay.
- Can have a lot of overtime.
- Occasionally accommodations paid.
- A lot of travel.
- Reports to Coordinator.

### Drop Zone Marker – Bag Marker

- Marks the spot where the bags of equipment are to be dropped by the helicopter.
- This position is typically filled by seismic helpers.
- May also work with the layout crew.
- All weather, outdoor job.
- Heavy lifting.
- Usually hourly pay.
- Can have a lot of overtime.
- Occasionally accommodations paid.
- A lot of travel.
- Reports to Coordinator.

### Shooter / Blaster

- This position is typically filled by seismic helpers.
- May also work with the layout crew.
- Uses a radio controlled blasting device to detonate dynamite in shot holes.
- Works with the operator via 2-way radio.
- Responsible for ensuring that the correct shot is being fired.
- Responsible for detonating dynamite and other explosives in a safe and efficient manner.
- Responsible for the safety and actions of the Shooter's Helper.
- All weather, outdoor job.
- Some heavy lifting.
- Usually hourly pay.
- Can have a lot of overtime.
- Occasionally accommodations paid.
- A lot of travel.
- Requires blasting ticket.

- Reports to Operator.

### Operator / Observer

- Works in the recorder – records data from shots using specialized computer equipment.
- Works with the shooters and troubleshooters via 2-way radio.
- Responsible for the entire crew in the field.
- Responsible for identifying problems with readings from field equipment.
- Responsible for deciding when background noise is low enough to shoot.
- Handles all field data.
- All weather, outdoor job.
- Some heavy lifting.
- Usually hourly or daily pay.
- Can have a lot of overtime.
- Occasionally accommodations paid.
- A lot of travel.
- Reports to Party Manager.

### Junior Operator / Observer

- This is a training position that leads to a senior operator position.
- Works in the recorder and assists the operator as necessary.
- Reports to Operator / Observer.

### Party Manager

- Responsible for the recording crew, all accommodations, hotshot payments, and client relations in the field.
- Reports to head office and to the client's representative in the field.
- Responsible for the conduct and productivity of the crew.
- Responsible for all data from the seismic job.
- Pay varies.
- Can have a lot of overtime.
- Occasionally accommodations paid.
- A lot of travel.

## **Line Clearing Crew Positions**

### Cat Push

- Responsible for the supervision of the slashing crew, cat operators, operators of other line clearing equipment, all accommodations, hotshot (meal allowance), and client relations in the field.
- Reports to head office as well as to the client's representative on site.
- Responsible for the conduct and productivity of the line clearing crew.
- Pay varies.
- Can have a lot of overtime.
- Occasionally accommodations paid.
- A lot of travel.

### Cat / Mulcher Operator

- Responsible for the safe and efficient operation of the cat, mulcher, or other line clearing equipment.

- Reports to the Cat Push.
- Responsible for determining and clearing safe routes around obstacles.
- May use GPS for guidance, otherwise follows the line of sight cut by the slashers.
- Pay varies.
- Can have a lot of overtime.
- Occasionally accommodations paid.
- Works closely with the Line Producer.

### Head Slasher

- Cutting and clearing trees for seismic lines, pipelines, etc.
- May require own chainsaw and PPE (personal protective equipment).
- Require chainsaw ticket.
- Pay by hour or meter.
- Responsible for the safe operation and productivity of the slashing crew.
- Reports to Cat Push, Slasher Push, or Survey Coordinator.

### Slasher

- Responsible for safe operation of chainsaw and other equipment.
- Reports to Head Slasher.
- Pay by hour or meter.
- May require own chainsaw and PPE (personal protective equipment).
- Require chainsaw ticket.
- Helps head slasher as required.

\* *A Chainsaw ticket is a certification of chain saw safety*

## **Seismic Drilling Positions**

### Drill Push

- Responsible for all drilling rigs on the job.
- Responsible for all equipment and explosives.
- Responsible for ordering all necessary equipment and explosives.
- Responsible for safety on the job site, including safe handling of explosives.
- Reports to head office and to the client representative on site.
- Pay varies.

### Driller (Seismic)

- Drives and runs the drilling rig.
- Drills holes on shot point flags and supervises the loading of dynamite.
- Responsible for the safe operation and productivity of the drilling rig.
- Responsible for all equipment, drill bits, dynamite, blasting caps, and other explosive material.
- Responsible for the safety of the driller's helper.
- Reports to the Drill Push.
- Pay by meter drilled, by hour, or by day.

### Driller's Assistant

- Loads dynamite into shot holes.
- Responsible for safe explosive handling.

- Reports to the Driller.
- Pay by meter or foot drilled, by hour, or by day.
- Helps Driller as required.

## **Vibe and Alternative Source Positions**

### Vibe Tech

- Ensures that all vibrators are properly maintained and operational.
- Responsible for the safe and efficient operation of all vibrators on the job.
- Responsible for the maintenance of all vibrators and related equipment.
- Responsible for the training and supervision of Vibe Operators.
- Reports to head office, Operator, and Party Manager.
- Vibe Techs and Operators typically travel with the seismic crew.
- Usually requires Heavy Equipment Technician certification.
- Pay varies with experience and certification.

### Vibe (or other source) Operator

- Drive and run the vibrators for vibroseis operations.
- For vibroseis operations, the Vibe Operator replaces the drillers and shooters.
- Responsible for locating the vibrator in the correct positions for shots.
- Responsible for the safe and efficient operation of the vibrator.
- Reports to the Vibe Tech and Operator.
- Works closely with the Operator via 2-way radio.
- Vibe Operators typically travel with the seismic crew.
- Pay by hour or day.

## **Seismic Survey Crew Positions**

### Survey Coordinator (Seismic)

- Responsible for the safe operation, conduct, and productivity of all chaining and survey crews on the job.
- Reports to head office and to the client representative on site.
- Usually daily pay.

### Line Producer

- Senior Seismic Surveyor.
- Uses existing survey evidence to place the seismic line in the correct position.
- Instructs the slashers where to cut the seismic line.
- Decides where to deflect the seismic lines to avoid major obstacles.
- Works closely with Cat Operators and Head Slasher to construct the line, as well as detours around obstacles for drill rigs and trucks.
- In heli-portable operations, chooses locations for heli-pads.
- Responsible for the cleanliness and safety of the line.
- Reports to Survey Coordinator.

### Surveyor - GPS (seismic)

- Uses GPS equipment to locate the seismic line and place flags at designated intervals.

- Responsible for keeping shot points legal distances from houses, water wells, pipelines, etc.
- Responsible for survey data.
- Responsible for all GPS equipment.
- Responsible for actions of surveyor's helper, if provided.
- Creates chaining notes and line sketches.
- Usually daily pay.
- Reports to Survey Coordinator.

### Surveyor - Conventional (seismic)

- Responsible for the safe operation of the survey crew.
- Operates the survey instrument.
- Usually daily pay.
- Measures distances and angles between points on the seismic lines.
- Double checks the work of the chainer.
- Creates line sketches.
- Ties seismic lines to existing survey evidence to verify location.
- Responsible for field survey data.
- Responsible for the surveyor's helper's actions.
- Responsible for keeping explosives legal distances from houses, water wells, pipelines, etc.
- Reports to the Survey Coordinator.

### Surveyor's Assistant

- Responsible for giving the surveyor accurate shots on all shot points and land contours.
- Usually daily pay.
- Helps the surveyor as required.
- Uses a rod with prisms to reflect the beam of the survey instrument to measure distances and angles.
- If chaining, responsible for choosing locations for shot points, as well as the accurate numbering and placement of flags.
- Reports to the Surveyor.

### Chainer

- Pulls a cable with marks at designated intervals where flags are to be placed.
- Creates chaining notes and sketches of the seismic line.
- Decides where to place shot points to maintain legal distances from houses, water wells, pipelines, etc.
- Responsible for the safe placement of shot points.
- Responsible for the chainer's helper's actions.
- Reports to the Survey Coordinator.
- Usually daily pay.

### Chainer's Assistant

- Places flags on marks on the cable.
- Measures distances from flags to features in terrain.
- Numbers all flags.
- Responsible for the accurate numbering and placement of flags.

- Reports to Chainer.
- Helps chainer as required.
- Usually daily pay.

### Mapper

- Uses GPS or conventional equipment, as well as specialized computer equipment to create a detailed map of the seismic lines and surrounding areas.
- Responsible for including all relevant information on maps.
- Usually daily or hourly pay.
- Reports to Survey Coordinator.

### Pipe and Buried Utility Locator

- Uses information and maps from oil companies, as well as field evidence to determine the location of buried pipelines, cables, and other utilities.
- Uses specialized equipment to find, track, and mark pipelines and buried utilities of all kinds.
- Responsible for finding and documenting all pipelines and other utilities in the area of the seismic job.
- Responsible for the training and safety of the locator's helper.
- Usually daily or hourly pay.
- Reports to Survey Coordinator.
- May require Pipe Locating ticket.

### Assistant Locator

- Helps the Pipe Locator as necessary.
- Usually daily pay.
- Reports to Pipe Locator.

# Mapping and Survey Jobs

## Land Survey Positions

Land surveyors are responsible for creating legal property boundaries for roads, pipelines, facility sites, subdivisions, and other right of ways and easements.

Boundaries may be marked with a large variety of different markers. Some of the markers typically used include steel spikes, steel or iron posts, and marker caps mounted on sections of pipe or iron bars. These markers are usually buried and are intended to be permanent, and many jurisdictions impose heavy fines and jail sentences for the removal or destruction of these markers.

If the survey is intended to create boundaries for a pipeline, well site, or other facility, crews will also mark the locations of these markers with painted wooden lathe so that the boundaries are visible during construction.

Once a survey is registered with the land titles division of the government, the boundaries created are legally binding.

### Land Survey Coordinator

- Senior land surveyor.
- Responsible for the coordination of the survey project.
- Responsible for the production and safe operation of all survey crews.
- Conducts safety meetings.
- Works closely with the client's field representative to determine the placement of right-of-ways, facility sites, etc.
- May also perform survey duties.
- Hourly pay or contract position.
- Can have a lot of overtime.
- Occasionally accommodations and meals paid.
- A lot of travel.
- Reports to head office.

### Land Surveyor - Party Chief

- Uses a total station survey instrument or GPS system.
- Places survey monuments to establish legal boundaries including property lines, right-of-ways, easements, etc.
- Uses existing survey plans and sketches to determine locations of existing survey monuments, as well as to place new monuments.
- Uses trigonometry and other mathematic functions extensively.
- Creates sketches of existing and new surveys.
- Responsible for providing accurate survey data.
- Responsible for the actions of the survey assistant.
- Responsible for the safety and production of the survey crew.
- Very physical job.
- All weather, outdoor job.
- Heavy lifting.
- Usually hourly pay.
- Can have a lot of overtime.
- Occasionally accommodations and meals paid.
- A lot of travel.

- Reports to Survey Coordinator or head office.

### Land Survey Assistant

- Helps the surveyor as required.
- Uses a rod with prisms to reflect the beam of the survey instrument to measure distances and angles or, uses GPS system to take measurements on survey monuments.
- Responsible for giving the surveyor accurate shots on all survey monuments and land contours.
- All weather, outdoor job.
- Heavy lifting.
- Usually hourly pay.
- Can have a lot of overtime.
- Occasionally accommodations and meals paid.
- A lot of travel.
- Reports to the Surveyor.

## **Seismic Survey Crew Positions**

### Survey Coordinator

- The survey company's representative in the field.
- Responsible for the safe operation, conduct, and productivity of all chaining and survey crews on the job.
- Conducts safety meetings and ensures that all employees understand safety procedures.
- Maintains detailed reports of crew expenses and productivity.
- Handles crew expenses like accommodations and meal allowances.
- Reports to head office and to the client representative on site.
- Usually daily pay.

### Line Producer

- Senior seismic surveyor.
- May use conventional (optical) survey equipment or GPS technology.
- Uses existing survey evidence to place the seismic line in the correct position.
- Instructs the slashers where to cut the seismic line.
- Decides where to deflect the seismic lines to avoid major obstacles.
- Works closely with Cat Operators and Head Slasher to construct the line, as well as detours around obstacles for drill rigs and trucks.
- In heli-portable operations, chooses locations for heli-pads.
- Responsible for the cleanliness and safety of the line.
- Reports to Survey Coordinator.

### Surveyor - GPS (seismic)

- Uses specialized GPS equipment to position the seismic line and place flags at designated intervals.
- Responsible for keeping shot points legal distances from houses, water wells, pipelines, etc.
- May work alone or with an assistant.
- Responsible for survey data.

- Responsible for all GPS equipment.
- Responsible for actions of surveyor's helper, if provided.
- Creates chaining notes and line sketches.
- Usually daily pay.
- Reports to Survey Coordinator.

### Surveyor - Conventional (optical)

- Responsible for the safe operation of the survey crew.
- Operates the survey instrument.
- Usually daily pay.
- Measures distances and angles between points on the seismic lines.
- Double checks the work of the chainer.
- Creates a sketch of the line showing relevant survey information.
- Ties seismic lines to existing survey evidence to verify location.
- Responsible for field survey data.
- Responsible for the surveyor's helper's actions.
- Responsible for keeping explosives legal distances from houses, water wells, pipelines, etc.
- Reports to the Survey Coordinator

### Surveyor's Assistant

- Responsible for giving the surveyor accurate shots on all shot points and land contours.
- Usually daily pay.
- Helps the surveyor as required.
- Uses a rod with prisms to reflect the beam of the survey instrument to measure distances and angles (conventional survey).
- May operate the GPS equipment (GPS survey).
- If placing flags, responsible for choosing locations for shot points, as well as the accurate numbering and placement of flags at proper intervals.
- Reports to the Surveyor

### Chainer

- Pulls a cable with marks at designated intervals where flags are to be placed.
- Creates chaining notes and sketches of the seismic line.
- Decides where to place shot points to maintain legal distances from houses, water wells, pipelines, etc.
- Responsible for the safe placement of shot points.
- Responsible for the chainer's helper's actions.
- Reports to the Survey Coordinator.
- Usually daily pay.

### Chainer's Assistant

- Places flags on marks on the cable.
- Measures distances from flags to features in terrain.
- Numbers all flags.
- Responsible for the accurate numbering and placement of flags.
- Reports to Chainer.
- Helps chainer as required.

- Usually daily pay.

### Mapper

- Uses GPS or conventional equipment, as well as specialized computer equipment, to create a detailed topographical map of the seismic lines and surrounding areas.
- Responsible for including all relevant information on maps.
- Usually daily or hourly pay.
- Reports to Survey Coordinator.

### Pipe and Buried Utility Locator

- Uses information and maps from oil companies, as well as field evidence to determine the location of buried pipelines, cables, and other utilities.
- Uses specialized equipment to find, track, and mark pipelines and buried utilities of all kinds.
- Responsible for finding and documenting all pipelines and other utilities in the area of the proposed construction.
- Responsible for the training and safety of the locator's helper.
- Usually daily or hourly pay.
- May require Pipe Locating ticket.

### Assistant Locator

- Helps the Utility Locator as necessary.
- Usually daily pay.
- Reports to Utility Locator.

### Land Agent—Also called a Land Man/Title Searcher

- Works on behalf of the oil company to acquire land for oilfield operations through leases, purchases, and access/usage agreements.
- Coordinates with the survey company, the oil company, and the land owners.
- May require training or government certification.

### Construction Consultant

- The oil company's representative in the field
- Determines best placement of wells, facilities, and pipelines within the target area, as well as access to those sites.
- Coordinates with the survey company, the land company, and landowners to determine acceptable placement of facilities, wells, and pipelines.
- Coordinates with construction companies to schedule rig / crew moves.
- Ensures that permits and government approvals are in place prior to construction or drilling, and that operations comply with local laws and company policies.
- Ensures that sites and routes are properly marked prior to the construction or rig crew's arrival.

# Transport Jobs

## Truck / Semi Driver

- Moves equipment and supplies to and from the job site.
- May transport oversized loads over long distances.
- May transport flammable or explosive loads.
- Ensures that the transport operates in a safe and efficient manner.
- May require a Hazmat endorsement

## Drilling Rig Transport Driver

- Quickly and safely moves the rig to its next location.
- Loads, transports, and unloads rig components.
- May drive long distances in remote areas.

## Oil Truck Driver

- \* Loads, transports, unloads oil
- \* Tests oil, gauges oil tanks and replaces seals
- \* Must be able to climb steps of tank battery (22 steep steps)
- \* Must be able to pack hoses
- \* Will work in all weather conditions
- \* Will require a HazMat endorsement
- \* May require doubles/triples endorsement
- \* May require use of hand held computer to input gauge readings and load size. Will document all readings.
- \* Requires frequently getting in and out of the truck
- \* Will be required to drive in and out of small locations
- \* Must be able to back up

## Salt/Fresh Water Truck Driver

- \* Loads, transports, and unloads salt water, fresh water, or manmade water
- \* Gauges tanks and replaces necessary seals
- \* Will document all readings and loads on run tickets
- \* Must be able to climb steps of tank battery (22 steep)
- \* Will work in all weather conditions
- \* Requires frequently getting in and out of the truck
- \* Requires work at various hours of the day
- \* Will be required to drive in and out of small locations
- \* Must be able to back up

## Water Truck Driver

- Delivers portable water to camps and remote sites.
- locates sources of water and delivers water to drills.
- Maintains ice roads and bridges.
- Wets gravel roads to keep dust down during heavy use.

## Gravel Truck Driver

- Transports gravel and rock to the jobsite to line the pipeline corridor.
- Works with grader operators to maintain roads.

### String Truck Driver

- Loads and transports pipe to the jobsite.

### Supply Truck Driver

- Loads and transports food and other supplies to the jobsite or campsite using a covered transport.
- May be responsible for the timely delivery of food and other perishables.

### Vacuum Truck Driver

- Loads and transports water materials from jobsites and camps.
- Transports hazardous waste.
- Properly disposes of waste materials.
- May require a HazMat endorsement

### Explosives Delivery Driver

- Loads and transports explosive material to the jobsite in a safe manner.
- Unloads explosives and ensures the safe storage of explosives at the jobsite.
- Ensures that regulations regarding dangerous goods transport are followed during transportation and at the jobsite.
- Requires a HazMat endorsement

### Fuel Truck Driver

- Safely transports various fuels to the jobsite.
- Refuels fuel storage tanks, vehicles, and equipment as necessary.
- Ensures that all regulations regarding dangerous goods transport are followed.
- Requires a HazMat endorsement

### Hotshot Driver / Courier

- Transports supplies to crews in the field from nearby towns and cities.

### Helicopter Pilot

- Transports crews and supplies to and from jobsites.
- Moves heavy equipment using a long cable attached to the bottom of the helicopter.
- Ensures that all passengers are aware of hazards and emergency procedures.
- Ensures the safe operation of the aircraft and the safety of all passengers.
- May use bucket attachment to fight fires when necessary.
- May be required to land in confined areas or in otherwise less-than-ideal conditions.

### Commercial Airplane Pilot

- Transports crews and supplies to and from jobsites.
- May be required to fly in adverse weather conditions.
- May be required to land and take off from remote, unmaintained airstrips.

### Swamper

- Travels with the transport.
- Assists the driver as necessary.
- Loads and unloads the transport.
- Cleans the truck and equipment.
- Ensures that loads are properly tied down before transport.

### Mechanic

- Mechanics of all disciplines are required in the oil patch, including heavy duty equipment mechanics, automotive mechanics, small engine mechanics, specialty equipment mechanics, and aircraft mechanics.
- Mechanics are responsible for repairing vehicles and equipment in the field wherever possible.

### Dispatcher

- Receives calls and assigns trucks to various jobs.
- Responsible for the efficient operation of the trucking company.
- Keeps detailed records of calls and assignments for billing purposes.

### Picker Truck Driver / Operator

- Uses a hydraulic picker (boom) arm to safely load and unload heavy equipment.

### Forklift Operator

- Uses a forklift to load and unload trucks and to move equipment and supplies around the jobsite.

## To Learn More About the Oilfield

Visit these Websites

### Company Websites

#### **Black Hills Trucking**

<http://www.truecos.com/Black%20Hills%20Trucking/Default.htm>

#### **Halliburton**

<http://www.halliburton.com>

#### **Hamm & Phillips**

<http://www.hammphillips.com>

#### **Hess Corporation**

<http://www.hess.com>

#### **Key Energy**

<http://www.keyenergy.com>

#### **Nabors**

<http://www.nabors.com>

#### **Ref-Chem**

<http://www.ref-chem.com>

#### **Sanjel**

<http://www.sanjel.com>

#### **Schlumberger**

<http://www.slb.com>

### Additional Resources

#### **How Oil Drilling Works**

<http://science.howstuffworks.com/oil-drilling1.htm>

#### **Oilfield Workers Registry**

<http://www.oilfieldworkers.com/careers.php>

#### **Rockin The Bakken**

<http://rockinthebakken.com>

#### **Bakken Basics– Drilling, Fracing, Producing ( How it works)**

[www.ndoil.org/image/cache/Bakken\\_basics\\_Helms\\_and\\_Dokkes.pdf](http://www.ndoil.org/image/cache/Bakken_basics_Helms_and_Dokkes.pdf)

#### **BakkenShale.net**

<http://bakkenshale.net/threeforkssanish.html>

#### **Geology.com**

[www.geology.com/oil-and-gas/](http://www.geology.com/oil-and-gas/)